

# The genius of twin single beds

Words + Photos supplied

*Hot off the boat, the latest 2019 models from Germany include an increased number of twin single bed layouts due to rising demand*

Dethleffs' luxury Exclusiv 650RET features the largest kitchen of all Dethleffs caravans available in New Zealand

**F**or 2019, more stock of Dethleffs' popular twin single-bed layouts will be available, as demand has continued to increase year-on-year.

The Dethleffs Exclusiv 650RET and the equally popular Nomad 560RET both feature wide twin single beds and spacious rear bathrooms. These layouts are growing in

popularity worldwide as people begin to understand the many benefits provided by a twin single-bed layout.

The twin-bed style provides greater width per person than half the width of a typical island/French bed, allows for personalised bedding preferences, and enables individual access without partner disturbance. All these

benefits combine for an improved night's sleep.

In addition to this, access to overhead lockers and under-bed storage are greatly improved over traditional double-bed styles.

The ever-popular rear bathroom layout is at its best when combined with a twin single-bed layout due to unimpeded access through to the bathroom.





Owners of this model love the spacious, leather wrap-around lounge, substantial kitchen, and exceptional bedroom and bathroom layout

layout and proportions. Owners of this model love the spacious, leather wrap-around lounge, substantial kitchen, and exceptional bedroom and bathroom layout.

**NOMAD 560RET**

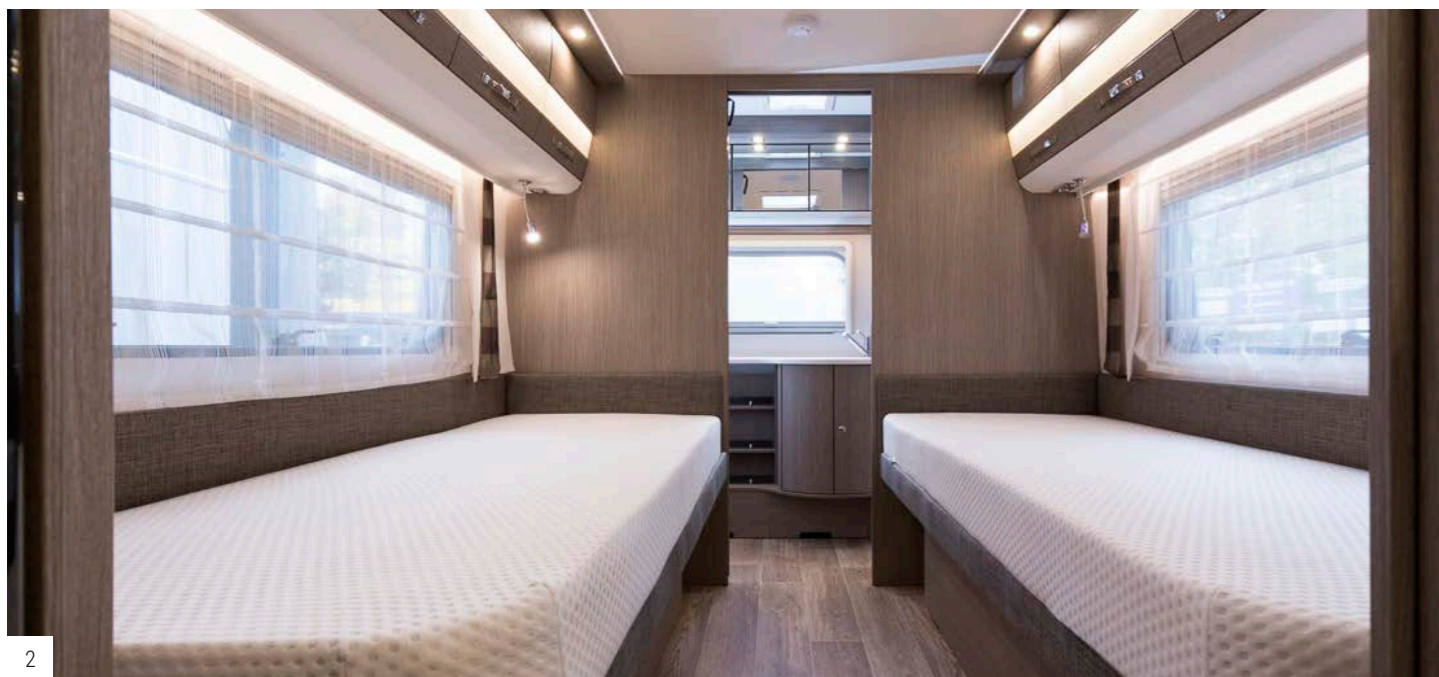
The Nomad 560RET offers the same layout benefits as its slightly larger Exklusiv 650RET counterpart, while being smaller, lighter and more affordable. The bedroom and bathroom size are identical to the Exklusiv 650RET,

however the kitchen and lounge have been slightly trimmed. Consequently, the overall length is reduced by 600mm. **RV**

Dethleffs caravans are available in New Zealand exclusively through Central RV:  
07 378 0620  
sales@centralrv.co.nz  
www.centralrv.co.nz

**EXCLUSIV 650RET**

At 7.35m body length, the Dethleffs Exklusiv 650RET is completely uncompromised in its



**EXCLUSIV 650RET**

- BODY:** 7.35m
- OVERALL:** 8.72m
- WIDTH:** 2.50m
- BERTH:** 4
- BED:** 2 x 2.0 x 0.85m
- WEIGHT:** 1918kg
- PAYLOAD:** 582kg
- TOTAL:** 2500kg
- AL-KO heavy-duty chassis and suspension for extreme payloads
- AL-KO ATC Trailer Control System
- AL-KO AKS anti-sway coupling
- Double-glazed windows, fully insulated floor, roof and walls
- Fully self-contained with large on-board water tanks (monitored)
- 320W solar system and AGM deep-cycle battery
- Avtex 22" TV/DVD and KiwiSat 60cm auto-sat dish
- Alde central heating/hot water cylinder
- 5-6 person lounge and fully featured kitchen (incl. 175L three-way fridge-freezer)
- Separate shower, toilet and vanity

**NOMAD 560RET**

- BERTH:** 4
- BODY:** 6.75m
- OVERALL:** 8.18m
- WIDTH:** 2.50m
- BED:** 2 x 2.0 x 0.85m
- WEIGHT:** 1520kg
- PAYLOAD:** 480kg
- TOTAL:** 2000kg
- AL-KO heavy-duty chassis and suspension for extreme payloads
- AL-KO ATC Trailer Control System
- AL-KO AKS anti-sway coupling
- Double-glazed windows, fully insulated floor, roof and walls
- Fully self-contained with on-board water tanks (monitored)
- 160W solar system and AGM deep-cycle battery
- Avtex 19" TV/DVD and manual satellite dish
- Truma S5004 6.8kW heater with auto-ignition
- 4-5 person lounge and fully featured kitchen (incl. 142L three-way fridge-freezer)
- Separate shower, toilet and vanity

1. The Exklusiv 650RET layout is uncompromised in all aspects
2. Large single beds and best available bathroom and storage access are a hit with Exklusiv 650RET owners
3. Separate shower, toilet and vanity are a winning combo in the Nomad

**WHICH BED STYLE SUITS YOU?**

**ISLAND BED**

- Both people can access the bed independently
- Ease of making
- Traditionally popular
- Uses lots of floor space
- East-west island beds can cause access difficulties if layout not well thought through by the manufacturer



**FRENCH BED**

- Uses less floor space than island bed (allows for potentially bigger bathroom, kitchen or lounge within the same total floor space)
- Foot-end corner cut-out improves access past bed
- More difficult to make
- Only one person has free access in/out of bed



**TWIN SINGLE BEDS**

- Both people can access the bed independently
- Ease of making
- Easy access to overhead storage (with island/French bed typically you need to kneel on bed to access overhead lockers)
- Bed width is typically more per person than half the width of an island/French bed
- Access through to a rear bathroom is completely unimpeded
- Bedroom can be used as a second lounge area



**TWIN SINGLE BEDS/DOUBLE CONVERSION**

- Twin bed can be easily converted to a large bed for two with pull-out base and mattress insert
- Both people can access the bed independently
- Ease of making
- Bed width is significantly more per person than half the width of an island/French bed and more than traditional twin single layout
- Bedroom can be used as a second lounge area

